

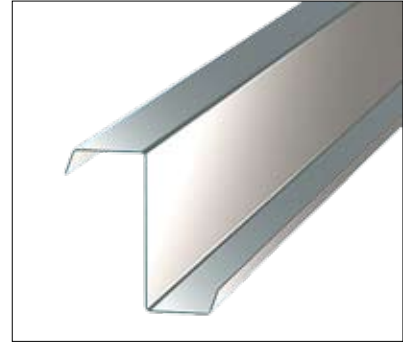
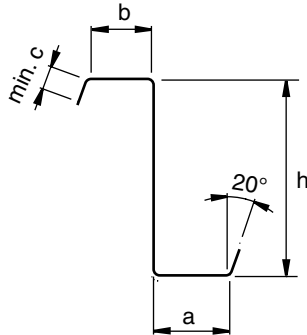


Lindab Construline™

Lindab Purlins
Technical Information

Technical Facts

Z purlin



Cross section properties for Z-purlins, both flanges supported

Note: All values calculated according to Swedish Code and STBK-N5

Type	Thickness mm	a	b	h	I _{eff} [10 ⁴ mm ⁴]	I _{br} [10 ⁴ mm ⁴]	W _{eff} [10 ³ mm ³]	V _{Rd} [kN]	Allowable support reaction (L=55mm)		Md [kNm]
									Mid support	End support	
Z100 (HU, SE)	1.00	47.00	41.00	100.00	28.7	31.7	5.28	9.5	5.1	2.6	1.85
	1.20	47.00	41.00	100.00	37.6	38.2	7.36	15.3	7.2	3.6	2.58
	1.50	47.00	41.00	100.00	48.4	48.4	9.61	24.2	10.7	5.4	3.36
	2.00	47.00	41.00	100.00	63.7	63.7	12.72	43.8	18.0	9.0	4.45
Z120 (HU, SE)	1.00	47.00	41.00	120.00	42.7	48.5	6.41	7.9	5.1	2.6	2.24
	1.20	47.00	41.00	120.00	56.3	58.5	9.00	14.1	7.2	3.6	3.15
	1.50	47.00	41.00	120.00	74.2	74.2	12.28	24.2	10.7	5.4	4.30
	2.00	47.00	41.00	120.00	98.0	98.0	16.28	43.8	18.0	9.0	5.70
Z150 (HU, SE)	1.00	47.00	41.00	150.00	69.5	82.1	8.13	6.3	5.1	2.6	2.85
	1.20	47.00	41.00	150.00	91.9	99.1	11.39	11.3	7.2	3.6	3.99
	1.50	47.00	41.00	150.00	123	126	15.94	22.4	10.7	5.4	5.58
	2.00	47.00	41.00	150.00	166	166	22.11	43.8	18.0	9.0	7.74
	2.50	47.00	41.00	150.00	211.9	211.9	28.08	69.1	26.3	13.1	9.83
Z200 (SE)	1.00	47.00	41.00	200.00	130	163	11.04	4.7	5.1	2.6	3.86
	1.20	47.00	41.00	200.00	173	197	15.45	8.5	7.2	3.6	5.41
	1.50	47.00	41.00	200.00	232	251	21.58	16.8	10.7	5.4	7.55
	2.00	47.00	41.00	200.00	325	333	31.61	41.0	18.0	9.0	11.06
Z200 (HU)	1.00	74.00	66.00	200.00	152	217	12.02	4.7	4.9	2.4	4.21
	1.20	74.00	66.00	200.00	205	264	17.14	8.5	6.9	3.4	6.00
	1.50	74.00	66.00	200.00	288	331	25.65	16.8	10.4	5.2	8.98
	2.00	74.00	66.00	200.00	430	444	41.34	41.0	17.5	8.7	14.47
	2.50	74.00	66.00	200.00	556	556	55.10	69.1	26.3	13.1	19.29
Z250 (HU, SE)	1.50	74.00	66.00	250.00	470	566	32.51	13.5	10.4	5.2	11.38
	2.00	74.00	66.00	250.00	709	760	52.89	32.8	17.5	8.7	18.51
	2.50	74.00	66.00	250.00	933	953	72.55	65.0	26.3	13.1	25.39
	3.00	74.00	66.00	250.00	1149	1149	91.33	100.9	36.8	18.4	31.97

Technical Facts

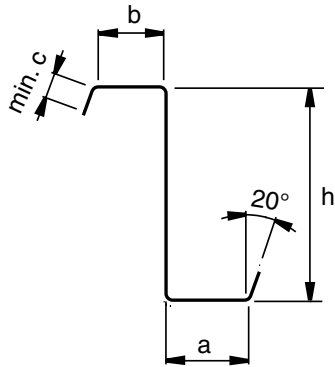
Cross section properties for Z-purlins, both flanges supported

Note: All values calculated according to Swedish Code and STBK-N5

Type	Thickness mm	a	b	h	I _{eff} [10 ⁴ mm ⁴]	I _{br} [10 ⁴ mm ⁴]	W _{eff} [10 ³ mm ³]	V _{Rd} [kN]	Allowable support reaction (L=55mm)		Md [kNm]
									Mid support	End support	
Z300 (HU, SE)	1.50	90.00	82.00	300.00	745	994	40.76	11.2	10.4	5.2	14.27
	2.00	90.00	82.00	300.00	1162	1340	69.05	27.3	17.5	8.7	24.17
	2.50	90.00	82.00	300.00	1581	1680	99.40	54.2	26.3	13.1	34.79
	3.00	90.00	82.00	300.00	1984	2020	129.00	95.6	36.8	18.4	45.15

Technical Facts

ZS purlin (slotted)



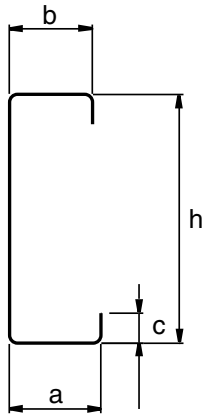
Cross section properties for slotted Z-purlins, ZS, both flanges supported

Note: Design values of slotted profiles will be included in Lindab System Solutions

Type	Thickness mm	a	b	h
Z100 (SE)	1.00	47.00	41.00	100.00
	1.20	47.00	41.00	100.00
	1.50	47.00	41.00	100.00
	2.00	47.00	41.00	100.00
Z120 (SE)	1.00	47.00	41.00	120.00
	1.20	47.00	41.00	120.00
	1.50	47.00	41.00	120.00
	2.00	47.00	41.00	120.00
Z150 (SE)	1.00	47.00	41.00	150.00
	1.20	47.00	41.00	150.00
	1.50	47.00	41.00	150.00
	2.00	47.00	41.00	150.00
	2.50	47.00	41.00	150.00
Z200 (SE)	1.00	47.00	41.00	200.00
	1.20	47.00	41.00	200.00
	1.50	47.00	41.00	200.00
	2.00	47.00	41.00	200.00

Technical Facts

C purlin



Cross section properties for C-purlins, both flanges supported

Note: All values calculated according to Swedish Code and STBK-N5.

Product	t [mm]	a	b	h	I _{eff} [10 ⁴ mm ⁴]	I _{br} [10 ⁴ mm ⁴]	W _{eff} [10 ³ mm ³]	VRd [kN]	Allowable support reaction (L=55mm)		Md [kNm]
									Mid support	End support	
C70 (HU, SE)	0.70	47.00	41.00	70.00	7.0	8.9	1.69	3.6	2.2	1.1	0.59
	1.00	47.00	41.00	70.00	12.8	13.7	3.42	13.5	4.9	2.4	1.20
	1.50	47.00	41.00	70.00	20.6	20.6	5.80	23.3	6.9	3.4	2.03
C100 (HU, SE)	1.00	47.00	41.00	100.00	28.7	31.7	5.28	9.5	5.1	2.6	1.85
	1.20	47.00	41.00	100.00	37.6	38.2	7.36	15.3	7.2	3.6	2.58
	1.50	47.00	41.00	100.00	48.4	48.4	9.61	24.2	10.7	5.4	3.36
	2.00	47.00	41.00	100.00	63.7	63.7	12.72	43.8	18.0	9.0	4.45
C120 (HU, SE)	1.00	47.00	41.00	120.00	42.7	48.5	6.41	7.9	5.1	2.6	2.24
	1.20	47.00	41.00	120.00	56.3	58.5	9.00	14.1	7.2	3.6	3.15
	1.50	47.00	41.00	120.00	74.2	74.2	12.28	24.2	10.7	5.4	4.30
	2.00	47.00	41.00	120.00	98.0	98.0	16.28	43.8	18.0	9.0	5.70
C150 (HU, SE)	1.00	47.00	41.00	150.00	69.5	82.1	8.13	6.3	5.1	2.6	2.85
	1.20	47.00	41.00	150.00	91.9	99.1	11.39	11.3	7.2	3.6	3.99
	1.50	47.00	41.00	150.00	123	126	15.94	22.4	10.7	5.4	5.58
	2.00	47.00	41.00	150.00	166	166	22.11	43.8	18.0	9.0	7.74
	2.50	47.00	41.00	150.00	211.9	211.9	28.08	69.1	26.3	13.1	9.83
C200 (SE)	1.00	47.00	41.00	200.00	130	163	11.04	4.7	5.1	2.6	3.86
	1.20	47.00	41.00	200.00	173	197	15.45	8.5	7.2	3.6	5.41
	1.50	47.00	41.00	200.00	232	251	21.58	16.8	10.7	5.4	7.55
	2.00	47.00	41.00	200.00	325	333	31.61	41.0	18.0	9.0	11.06
C200 (HU)	1.00	74.00	66.00	200.00	152	217	12.02	4.7	4.9	2.4	4.21
	1.20	74.00	66.00	200.00	205	264	17.14	8.5	6.9	3.4	6.00
	1.50	74.00	66.00	200.00	288	331	25.65	16.8	10.4	5.2	8.98
	2.00	74.00	66.00	200.00	430	444	41.34	41.0	17.5	8.7	14.47
	2.50	74.00	66.00	200.00	556	556	55.10	69.1	26.3	13.1	19.29

Technical Facts

Cross section properties for C-purlins, both flanges supported

Note: All values calculated according to Swedish Code and STBK-N5.

Product	t [mm]	a	b	h	I _{eff} [10 ⁴ mm ⁴]	I _{br} [10 ⁴ mm ⁴]	W _{eff} [10 ³ mm ³]	VRd [kN]	Allowable support reaction (L=55mm)		Md [kNm]
									Mid support	End support	
C250 (HU, SE)	1.50	74.00	66.00	250.00	470	566	32.51	13.5	10.4	5.2	11.38
	2.00	74.00	66.00	250.00	709	760	52.89	32.8	17.5	8.7	18.51
	2.50	74.00	66.00	250.00	933	953	72.55	65.0	26.3	13.1	25.39
	3.00	74.00	66.00	250.00	1149	1149	91.33	100.9	36.8	18.4	31.97
C300 (HU, SE)	1.50	90.00	82.00	300.00	745	994	40.76	11.2	10.4	5.2	14.27
	2.00	90.00	82.00	300.00	1162	1340	69.05	27.3	17.5	8.7	24.17
	2.50	90.00	82.00	300.00	1581	1680	99.40	54.2	26.3	13.1	34.79
	3.00	90.00	82.00	300.00	1984	2020	129.00	95.6	36.8	18.4	45.15
C350 (HU)	2.00	100.00	92.00	350.00	1677	2030	82.83	23.4	17.5	8.7	28.99
	2.50	100.00	92.00	350.00	2297	2550	120.00	46.4	26.3	13.1	42.00
	3.00	100.00	92.00	350.00	2949	3080	161.00	81.9	36.8	18.4	56.35

CI purlin

Can be made to fit for corresponding C-sections and thicknesses.



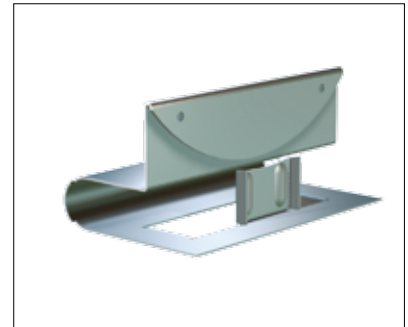
Technical Facts

Floor structure – components

Note: Floor structure design models can be found in Lindab System Solutions

LBY Acoustic clamp

Type	Thickness mm	Width mm	Height mm	Mass kg/100pcs
LBY	1.0	130	70	18



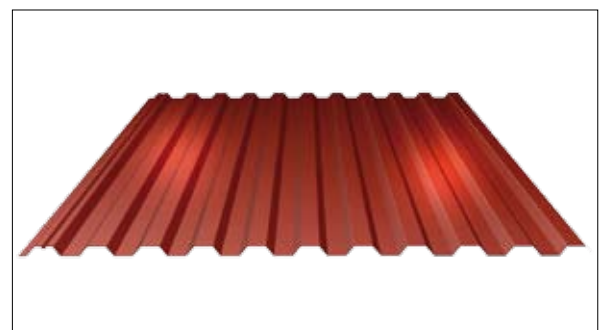
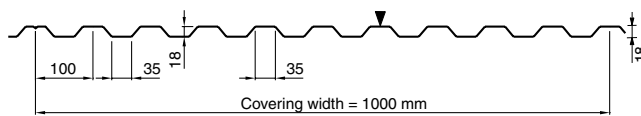
VBY Angle fitting

Type	Thickness mm	Width mm	Length mm	Mass kg/100pcs
VBY150	2.0	150	140	37
VBY200	2.0	200	190	51



LLP20 Profiled sheeting

Material thickness 0.6 and 0.7 mm.





Lindab Profile is a business area within the Lindab Group that develops, manufactures, and markets efficient, economical and aesthetic steel and sheet-metal solutions for the building industry.

We offer everything from complete building systems to individual building components for all types of housing, as well as commercial and industrial buildings.

Lindab Profile is represented in over 25 countries throughout Europe. Our head office is in Förslöv, in the south of Sweden.



Lindab Profile

SE-269 82 Båstad
Phone +46 (0)431 850 00
www.lindab.com