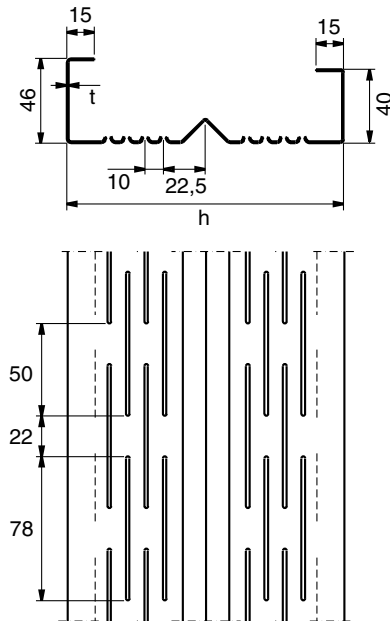


Lindab Construline™

Lindab Exterior Wall Profiles Technical Information

Technical Facts

RY Exterior wall studs



All RY studs can be delivered with PD10 attached, ordered as RYP.

Type	Thickness mm	Width mm	min/max lengths	Mass kg/m	Dead weight kN/m	Idef cm ⁴
RY100	0.70	100	1000-10500	1.20	0.01	11.3
RY100	1.00	100	1000-10500	1.60	0.02	18.3
RY100	1.20	100	1000-10500	2.00	0.02	22.5
RY100	1.50	100	1000-10500	2.50	0.02	28.6

Type	Thickness mm	Width mm	min/max lengths	Mass kg/m	Dead weight kN/m	Idef cm ⁴
RY120	0.70	120	1000-10500	1.20	0.01	18.0
RY120	1.00	120	1000-10500	1.60	0.02	28.7
RY120	1.20	120	1000-10500	2.00	0.02	35.2
RY120	1.50	120	1000-10500	2.50	0.03	44.6

Type	Thickness mm	Width mm	min/max lengths	Mass kg/m	Dead weight kN/m	Idef cm ⁴
RY145	0.70	145	1000-10500	1.20	0.01	28.0
RY145	1.00	145	1000-10500	1.60	0.02	45.4
RY145	1.20	145	1000-10500	2.00	0.02	55.9
RY145	1.50	145	1000-10500	2.50	0.03	70.9

Technical Facts

R_Y Exterior wall studs

Type	Thickness mm	Width mm	min/max lengths	Mass kg/m	Dead weight kN/m	I _{def} cm ⁴
R _Y 150	0.70	150	1000–10500	1.20	0.01	31.1
R _Y 150	1.00	150	1000–10500	1.60	0.02	49.6
R _Y 150	1.20	150	1000–10500	2.00	0.02	60.8
R _Y 150	1.50	150	1000–10500	2.50	0.02	77.0

Type	Thickness mm	Width mm	min/max lengths	Mass kg/m	Dead weight kN/m	I _{def} cm ⁴
R _Y 170	0.70	170	1000–10500	1.20	0.01	42.6
R _Y 170	1.00	170	1000–10500	1.60	0.02	67.7
R _Y 170	1.20	170	1000–10500	2.00	0.02	82.7
R _Y 170	1.50	170	1000–10500	2.50	0.03	104.2

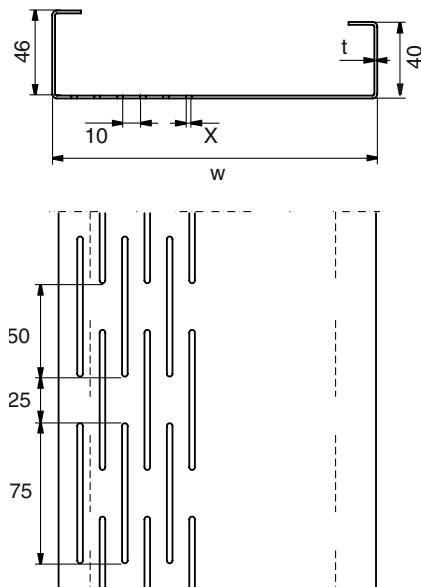
Type	Thickness mm	Width mm	min/max lengths	Mass kg/m	Dead weight kN/m	I _{def} cm ⁴
R _Y 195	0.70	195	1000–10500	1.20	0.02	59.0
R _Y 195	1.00	195	1000–10500	1.60	0.02	93.2
R _Y 195	1.20	195	1000–10500	2.00	0.03	113.8
R _Y 195	1.50	195	1000–10500	2.50	0.04	143.7

Type	Thickness mm	Width mm	min/max lengths	Mass kg/m	Dead weight kN/m	I _{def} cm ⁴
R _Y 200	0.70	200	1000–10500	1.20	0.02	62.7
R _Y 200	1.00	200	1000–10500	1.60	0.02	98.6
R _Y 200	1.20	200	1000–10500	2.00	0.03	120.3
R _Y 200	1.50	200	1000–10500	2.50	0.04	151.8

Type	Thickness mm	Width mm	min/max lengths	Mass kg/m	Dead weight kN/m	I _{def} cm ⁴
R _Y 220	0.70	220	1000–10500	1.20	0.02	78.1
R _Y 220	1.00	220	1000–10500	1.60	0.02	122.5
R _Y 220	1.20	220	1000–10500	2.00	0.03	149.4
R _Y 220	1.50	220	1000–10500	2.50	0.04	188.5

Technical Facts

RYP Reinforced exterior wall stud for windows and doors



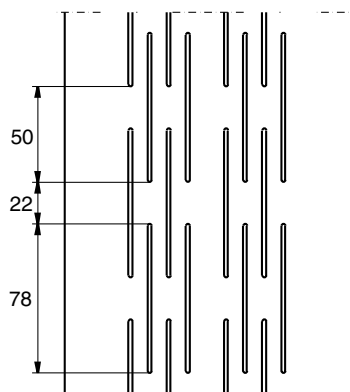
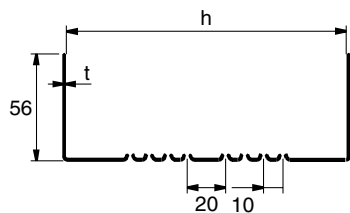
Type	Thickness mm	Width mm	min/max lengths	Mass kg/m	Dead weight kN/m	Idef cm ⁴
RYP145	1.20	145	1000-4000	1.20	0.01	45.0
RYP145	1.50	145	1000-4000	1.60	0.02	56.7

Type	Thickness mm	Width mm	min/max lengths	Mass kg/m	Dead weight kN/m	Idef cm ⁴
RYP170	1.20	170	1000-4000	1.20	0.01	72.2
RYP170	1.50	170	1000-4000	1.60	0.02	90.8

Type	Thickness mm	Width mm	min/max lengths	Mass kg/m	Dead weight kN/m	Idef cm ⁴
RYP195	1.20	195	1000-4000	1.20	0.01	110.2
RYP195	1.50	195	1000-4000	1.60	0.02	138.7

Technical Facts

SKY Exterior wall runners



All SKY runners can be delivered with PD10 attached, ordered as SKYP.

Type	Thickness mm	Width mm	min/max lengths	Mass kg/m	Dead weight kN/m	Idef cm ⁴
SKY100	0.70	100	1000-10500	1.20	0.01	10.5
SKY100	1.00	100	1000-10500	1.60	0.02	17.2
SKY100	1.20	100	1000-10500	2.00	0.02	21.3
SKY100	1.50	100	1000-10500	2.50	0.02	27.6

Type	Thickness mm	Width mm	min/max lengths	Mass kg/m	Dead weight kN/m	Idef cm ⁴
SKY120	0.70	120	1000-10500	1.20	0.01	17.5
SKY120	1.00	120	1000-10500	1.60	0.02	27.9
SKY120	1.20	120	1000-10500	2.00	0.02	34.4
SKY120	1.50	120	1000-10500	2.50	0.03	43.8

Type	Thickness mm	Width mm	min/max lengths	Mass kg/m	Dead weight kN/m	Idef cm ⁴
SKY145	0.70	145	1000-10500	1.20	0.01	29.5
SKY145	1.00	145	1000-10500	1.60	0.02	46.6
SKY145	1.20	145	1000-10500	2.00	0.02	57.4
SKY145	1.50	145	1000-10500	2.50	0.03	72.9

Technical Facts

SKY Exterior wall runners

Type	Thickness mm	Width mm	min/max lengths	Mass kg/m	Dead weight kN/m	Idef cm ⁴
SKY150	0.70	150	1000-10500	1.20	0.01	32.2
SKY150	1.00	150	1000-10500	1.60	0.02	50.8
SKY150	1.20	150	1000-10500	2.00	0.02	62.3
SKY150	1.50	150	1000-10500	2.50	0.02	79.5

Type	Thickness mm	Width mm	min/max lengths	Mass kg/m	Dead weight kN/m	Idef cm ⁴
SKY170	0.70	170	1000-10500	1.20	0.02	44.0
SKY170	1.00	170	1000-10500	1.60	0.02	68.9
SKY170	1.20	170	1000-10500	2.00	0.03	84.4
SKY170	1.50	170	1000-10500	2.50	0.03	106.9

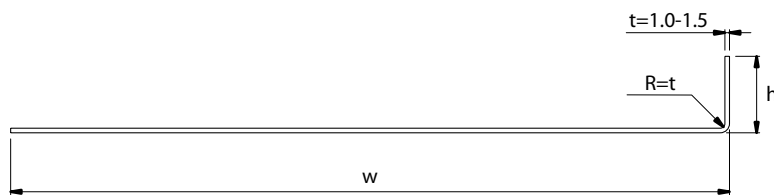
Type	Thickness mm	Width mm	min/max lengths	Mass kg/m	Dead weight kN/m	Idef cm ⁴
SKY195	0.70	195	1000-10500	1.20	0.02	60.8
SKY195	1.00	195	1000-10500	1.60	0.02	94.7
SKY195	1.20	195	1000-10500	2.00	0.03	115.9
SKY195	1.50	195	1000-10500	2.50	0.04	146.4

Type	Thickness mm	Width mm	min/max lengths	Mass kg/m	Dead weight kN/m	Idef cm ⁴
SKY200	0.70	200	1000-10500	1.20	0.02	64.5
SKY200	1.00	200	1000-10500	1.60	0.02	100.7
SKY200	1.20	200	1000-10500	2.00	0.03	122.9
SKY200	1.50	200	1000-10500	2.50	0.04	155.2

Type	Thickness mm	Width mm	min/max lengths	Mass kg/m	Dead weight kN/m	Idef cm ⁴
SKY220	0.70	220	1000-10500	1.20	0.02	77.0
SKY220	1.00	220	1000-10500	1.60	0.02	119.8
SKY220	1.20	220	1000-10500	2.00	0.03	146.0
SKY220	1.50	220	1000-10500	2.50	0.04	184.0

Technical Facts

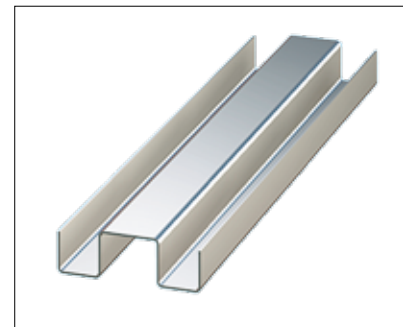
YVX Lintel profile



Type	Thickness mm	Height mm	Width mm	min/max lengths	Mass kg/100 m	Dead weight kN/m
YVX215	1.0	35	215	1000-4000	164	0.01
YVX240	1.2	20	240	1000-4000	235	0.02
YVX290	1.2	20	290	1000-4000	280	0.02
YVX235	1.5	15	235	1000-4000	282	0.02
YVX285	1.5	25	285	1000-4000	336	0.02

ÄA End stiffener

Type	Thickness mm	Width mm	Height/width mm	Mass kg/100pcs
ÄA100	0.7	100	15/48.5	55
ÄA120	0.7	120	15/48.5	65
ÄA145	0.7	145	15/48.5	79
ÄA150	0.7	150	15/48.5	82
ÄA170	0.7	170	15/48.5	98
ÄA195	0.7	195	15/48.5	106
ÄA200	0.7	200	15/48.5	109
ÄA220	0.7	220	15/48.5	112

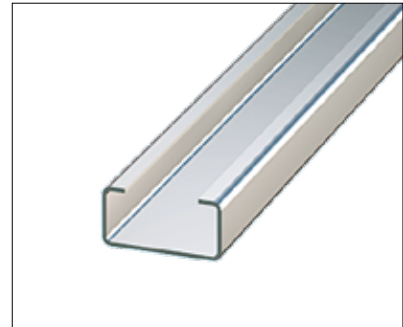
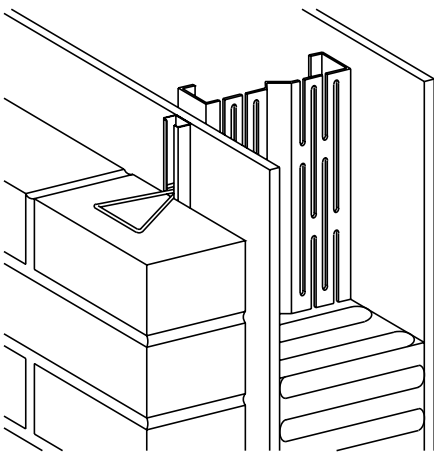


Distributes normal forces and increases end-support capacities.

Technical Facts

Other profiles, Exterior walls, external layers

MSK Bricklaying rail



Type	Thickness mm	Width mm	Height mm	Min/max Length	Mass kg/100m
MSK	1.0	32	15	1000/2500	48
MSK (stainless)	0.8	32	15	1000/2500	41

MK Bricklaying tie

Type	Thickness mm	Height mm	Mass kg/1000pcs
MK90	3	90	15
MK120	3	120	18
MK150	3	150	21

Max dimensioning value per tie 0.5 kN, in safety class 1, irrespective of direction of loading. The tie must reach at least 40 mm into the wall. Not more than one tie between stud fastening points, i.e. max. 600 mm.



Technical Facts

Other profiles, Exterior walls, internal layers

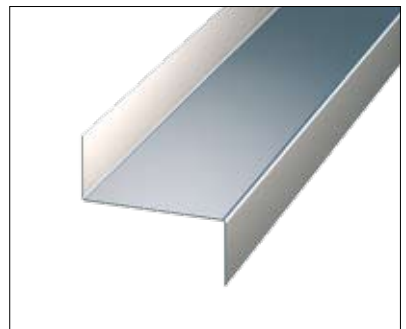
RCY C-profile for supplementary insulation, inside

Type	Thickness mm	Width mm	Height mm	Min/Max Length	Mass kg/100m
RCY45	0.5	45	30/50	1000-4000	49
RCY50	0.5	50	30/50	1000-4000	51
RCY70	0.5	70	30/50	1000-4000	59
RCY75	0.5	75	30/50	1000-4000	61

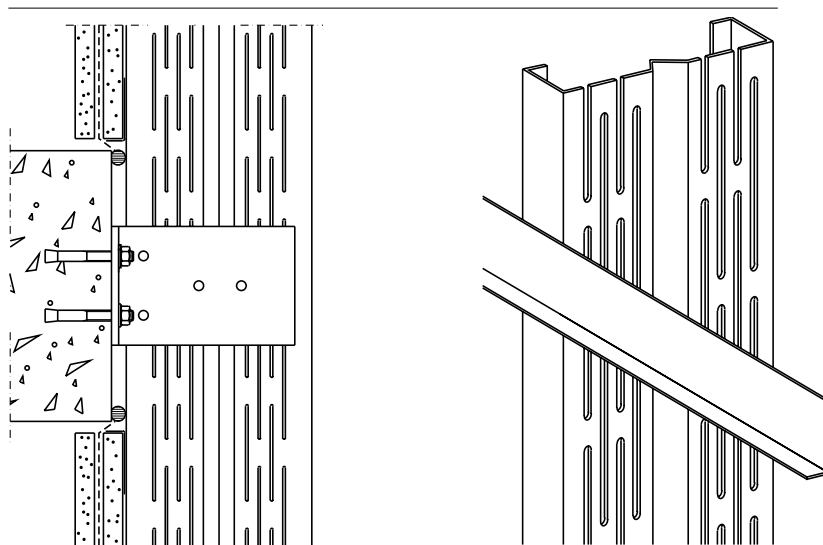


RZ Z-profile for supplementary insulation

Type	Thickness mm	Width mm	Height mm	Min/Max Length	Mass kg/100m
RZ45	0.7	45	30/30	1000-4000	58
RZ50	0.7	50	30/30	1000-4000	60
RZ70	0.7	70	30/30	1000-4000	71
RZ75	0.7	75	30/30	1000-4000	73



L-profile



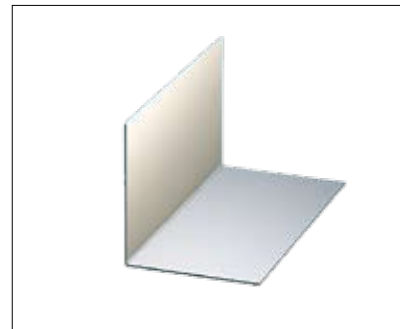
Type	Thickness mm	Width mm	Height mm	Min/Max Length	Mass kg/100m
L50	0.7	50	12	1000-4000	34
L100	0.7	100	12	1000-4000	62

Technical Facts

Supplementary products, framework

LPY Corner fitting

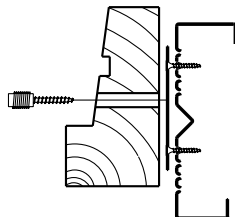
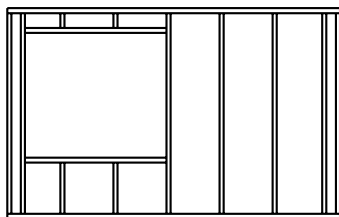
Type	Dim mm	Length mm	Height/width mm	Mass kg/1000pcs
LPY100	100	95	50/50	70
LPY120	120	115	50/50	90
LPY145	145	140	50/50	110
LPY150	150	145	50/50	114
LPY170	170	165	50/50	134
LPY195	195	190	50/50	149
LPY200	200	195	50/50	153
LPY220	220	215	50/50	155



BADY Fixing plate

Type	Thickness mm	Width mm	Min/Max Length	Mass kg/100m
BADY59	1.5	100	1000-4000	59

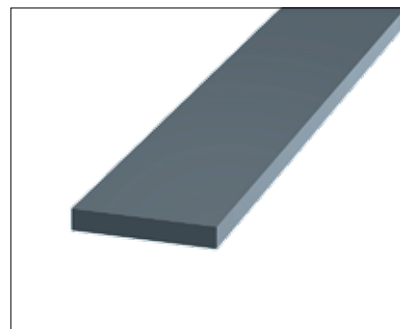
Note: For door and window fixing, use RYF instead.



PD10 Polythene 10 mm

Type	Width mm	Length/roll m	Mass kg/roll
PD10-100	100	70	1
PD10-120	120	70	2
PD10-145	145	70	2
PD10-170	170	70	2
PD10-195	195	70	3
PD10-200	195	70	3
PD10-220	220	70	3

Can also be applied to runners and studs, products will be delivered as RYP and SKYP.



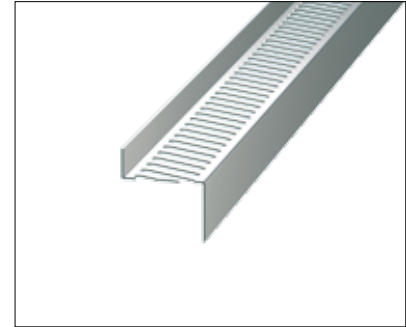
Technical Facts

Facade renovation, exterior walls

RFLEX Spacer batten

Type	Thickness mm	Width mm	Height mm	Min/Max Length	Mass kg/100m
RFLEX	1.2	50	52	1000-4000	80

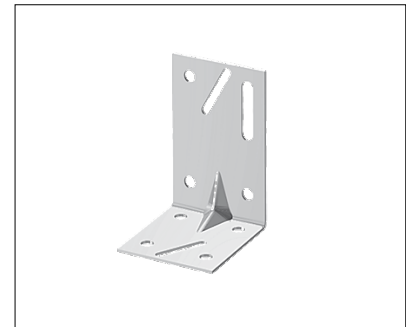
Yield point ≥ 350 N/mm²



UK Support bracket

Type	Thickness mm	Width mm	Height mm	Mass kg/100pcs
UK	1.5	120	95	0.25

Yield point ≥ 350 N/mm²



FLS Facade batten

Type	Thickness mm	Width mm	Height mm	Min/Max Length	Mass kg/100m
FLS	0.6	60	20	1000-3000	55

Yield point ≥ 250 N/mm²





Lindab Profile is a business area within the Lindab Group that develops, manufactures, and markets efficient, economical and aesthetic steel and sheet-metal solutions for the building industry.

We offer everything from complete building systems to individual building components for all types of housing, as well as commercial and industrial buildings.

Lindab Profile is represented in over 25 countries throughout Europe. Our head office is in Förslöv, in the south of Sweden.



Lindab Profile
SE-269 82 Båstad
Phone +46 (0)431 850 00
www.lindab.com