



Silencers

SLU 50
SLCU 50



SLU 100
SLCU 100



SLGU 100
SLGU 150



SLBU
SLCBU 100
SLBGU 100



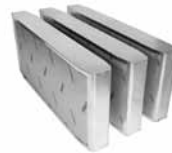
BSLU 50
BSLCU 50



BSLU 100
BSLCU 100



SLRA



SLRS



LRCA



LRCB



LRBCB



LRLB



DLD



DLDY



DLDR



BULD





Silencers

SLU, SLCU, SLGU, SLBU, SLCBU, SLBGU, BSLU, BSLCU, LRCA, LRCB, LRBCB

Assembly

In order to fulfil the requirements for air-tightness class D, the silencers must be installed as per 'Assembly Instruction Lindab Safe'.

LRCA, LRCB and LRBCB comply with air-tightness class C.

For dimension Ø 400 and larger, the loose inlet plugs must first be secured in the silencer (does not apply to LRCA, LRCB and LRBCB).

Catalogue values for attenuation are specified for installations in a straight duct, where the sound field have been guided straight. Positioning in a diffuse sound field, e.g. immediately after a fan or bend, means better attenuation.

Installation of two similar silencers in line immediately after each other means that you cannot completely count the silencing of the second silencer. For large draughts, the second silencer only contributes a few dB at 1000 Hz and 10 or so dB at high and low frequencies.

Maintenance

Silencers can be cleaned with rotating plastic whisks while cleaning ducts.



Silencers

SLU, SLCU, SLGU, SLBU, SLCBU, SLBGU, BSLU, BSLCU, LRCA, LRCB, LRBCB

Fire classes

Silencer	Insulation thickness nominal mm	Diameter nominal mm	Fire classes
SLCU BSLCU	50	80–400 125–315	EI 30, E 120
SLCU BSLCU SLCBU	100	80–800 125–630 315–800	EI 60, E 120
SLGU SLBGU	100	80–800 315–800	EI 15, E 60
SLGU	150	80–250	EI 30, E 60

Alternative to fire classes according to BBR 5:6213

To make use of the silencer's alternative to fire classes:

- must the protective distance according to the table below be embodied.
- mustn't the silencer's surface be changed, e.g. by paint coating.

Silencer	Insulation thickness nominal mm	Diameter nominal mm	Alternative to fire classes according to BBR 5:6213	Protective distance at the radiation intensity of		
				3 kW/m ² (evacuation person) mm	10 kW/m ² (fittings mtrl.) (combust. mtrl.) mm	30 kW/m ² (building mtrl.) (wood) mm
SLCU BSLCU	50	80–400 125–315	EI 120	50	5	5
SLCU BSLCU SLCBU	100	80–800 125–630 315–800	EI 120	50	5	5
SLGU	100	80–315	EI 60	50	5	5
		400–800	EI 30 EI 60			
SLBGU	100	315	EI 60	50	5	5
		400–800	EI 30 EI 60			
SLGU	150	80–250	EI 60	50	5	5



Rectangular silencers

DLD, DLDY, DLDR, BDL, LRLB, SLRA, SLRS

Assembly

In order to fulfil the requirements for air-tightness class C, the silencers must be installed as per 'Assembly Instruction Rectangular air duct systems'.

Catalogue values for attenuation are specified for installations in a straight duct, where the sound field have been guided straight. Positioning in a diffuse sound field, e.g. immediately after a fan or bend, means better attenuation.

Maintenance

The silencers normally don't require any maintenance.

Cleaning

The top layer of insulation can be cleaned with rotating plastic whisks. NB! Not steel. A vacuum cleaner and a damp cloth can also be used.



www.lindab.com