



Lindab Coverline™

## Lindab Flashings

Last but not least



## A perfect finish in a flash

Lindab's comprehensive range of roof and wall flashings means that the final result will be both functional and attractive. The easy-to-mount profiles are made of painted, hardwearing sheet metal.

We offer standard or custom-made profiles for any project imaginable – from ridge cappings and eaves boards, to sill flashes and valley gutters. You can choose from our standard colours or order a particular tint.

### **Lindab's flashings in a nutshell**

- extensive range of standard profiles
- special profiles on request
- wide range of colours
- painted for extreme durability

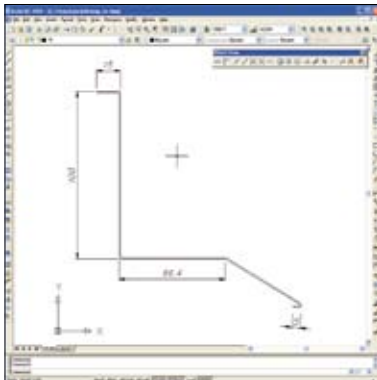


A full range of roof and wall flashings





# Different solutions for different purposes



### Standard or custom-made

We have standard flashings for almost any nook or cranny. We can also provide custom-made flashings for your particular project.



### Roofing and cladding

You can use our flashings with Lindab's roof and wall profiles to match the overall design.



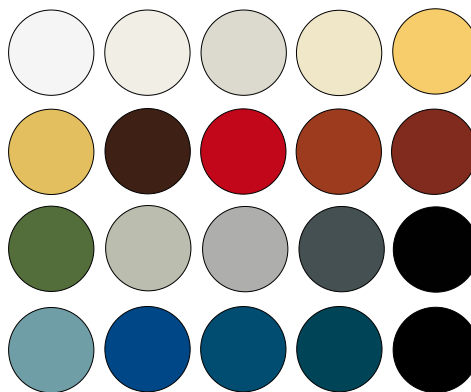
### Tile effect roofing

Enhance the appearance with harmonizing flashings on Lindab's elegant and timeless tile effect roofing.



### Fasteners

Our fasteners have been specially designed to simplify and match any design. In a variety of colours and rustproof for durability, they can be used for any material combination.



### Strong coatings in a wide range of colours

The polyester coating in matte or gloss finish reduces the risk of colours fading. The HB polyester coating is an advanced combination of thicker layers and extra-tough grains to resist scratches and general wear and tear.

The colour chart may be subject to changes. Contact your local dealer for the latest news.

## A variety of flashings



### The range includes:

- top flashings
- sill flashings
- weatherboards
- bargeboards
- eaves boards
- valley gutters
- drip flashings
- ridge cappings
- apron flashings
- corner flashings
- custom-made flashings
- flat sheets, with or without plastic foil

**Want to know more about  
Lindab Flashings?**

[www.lindab.com/buildingtechnology](http://www.lindab.com/buildingtechnology)



Lindab Profile is a business area within the Lindab Group that develops, manufactures and markets efficient, economical and aesthetic steel and sheet-metal solutions for the building industry.

We offer everything from complete building systems to individual building components for all types of housing, as well as commercial and industrial buildings.

Lindab Profile is represented in over 25 countries throughout Europe. Our head office is in Förslöv, in the south of Sweden.



**Lindab Profile**

SE-269 82 Båstad

Phone +46 (0)431 850 00

[www.lindab.com](http://www.lindab.com)